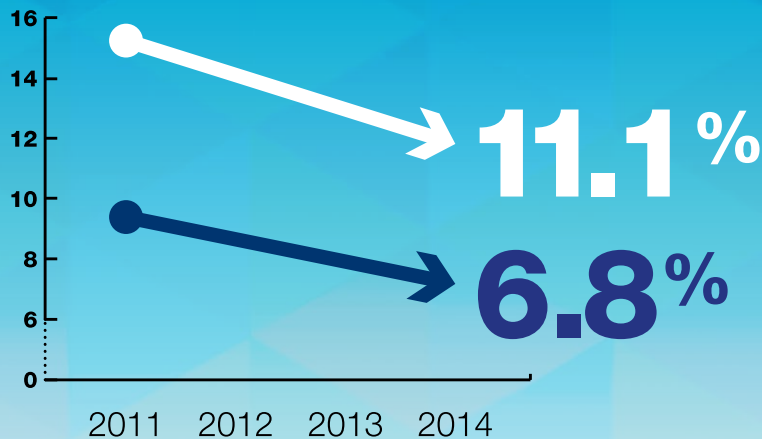
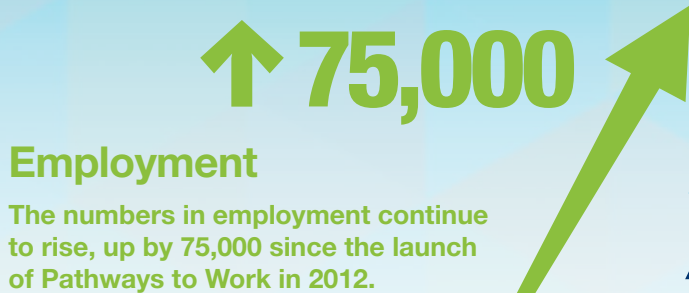


# Overview of the Irish Labour Market



## Unemployment rate

The unemployment rate is falling and is currently at 11.1%, the lowest rate in five years having fallen from a peak of just over 15% in 2011. Similarly, the long-term unemployment rate had fallen to 6.8% in Q2 2014, down from over 9% at the end of 2011.



## Employment

The numbers in employment continue to rise, up by 75,000 since the launch of Pathways to Work in 2012.



## Youth unemployment

The most recent figures show youth unemployment down by 11,400 year-on-year to 52,600 in Q2 2014.



## ↑ 15,000

## Pathways to Work

Over 15,000 long-term unemployed people moved into employment so far this year. The total number of long-term unemployed people who have moved into employment since Pathways was launched in 2012 is now over 54,000.

44 new Intreo offices have been opened since the launch of Pathways to Work



## Profiling

Over 450,000 live registrants have been profiled using the Department's profiling system. As a result, every jobseeker on the Live Register, has been profiled to help prioritise and direct interventions.

**X450,000**



Pathways to Work

